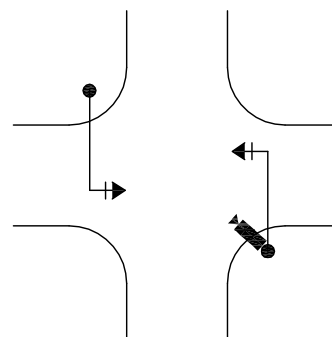
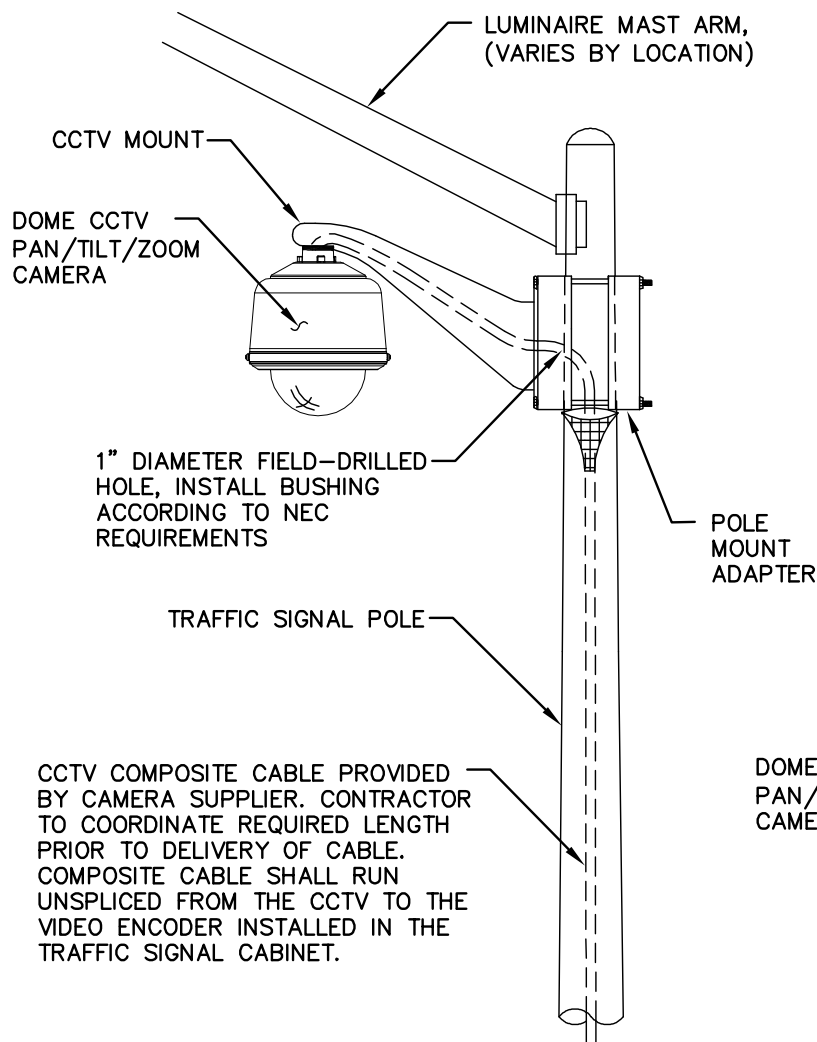


CCTV MOUNTING ASSEMBLY ORIENTATION



THE ROTATION OF THE CCTV MOUNT SHALL BE ALIGNED TO POINT AT THE TRAFFIC SIGNAL POLE ON THE DIAGONALLY OPPOSITE CORNER.

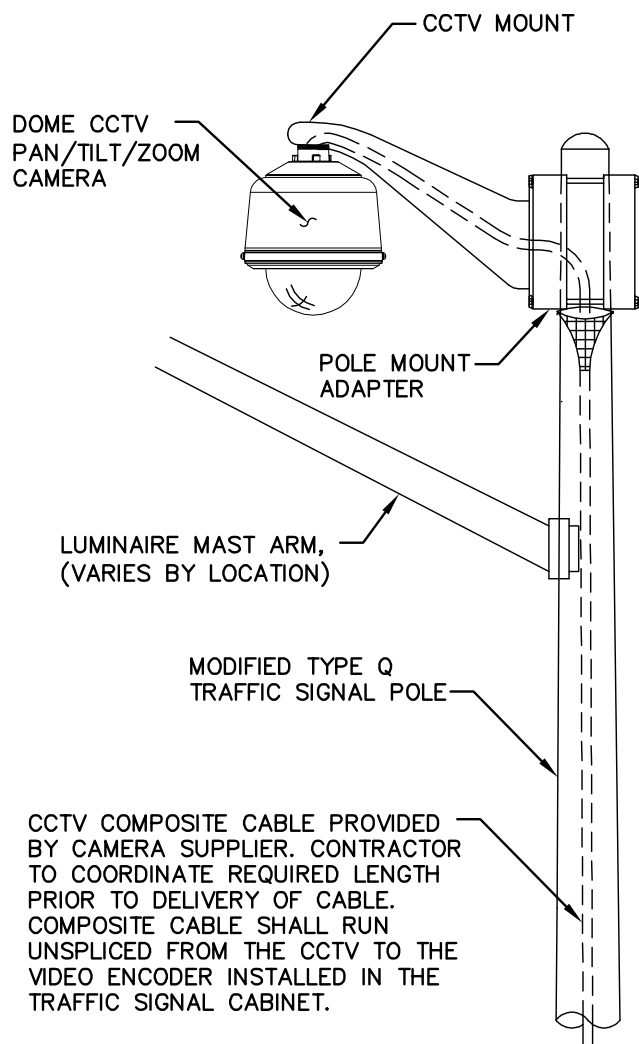


TYPICAL TRAFFIC SIGNAL POLE

CCTV COMPOSITE CABLE PROVIDED BY CAMERA SUPPLIER. CONTRACTOR TO COORDINATE REQUIRED LENGTH PRIOR TO DELIVERY OF CABLE. COMPOSITE CABLE SHALL RUN UNSPLICED FROM THE CCTV TO THE VIDEO ENCODER INSTALLED IN THE TRAFFIC SIGNAL CABINET.

INSTALLATION NOTES:

1. THE CABLING SHALL BE CONTAINED INSIDE OF THE POLE. A HOLE SHALL BE DRILLED IN THE POLE FOR CABLING TO EXIT THE POLE AND FEED THROUGH THE MOUNTING ASSEMBLY. THE HOLE SHALL BE SEALED TO PREVENT ANY WATER FROM ENTERING THE POLE. CABLING WITHIN THE POLE SHALL HAVE A MEANS OF CABLE SUPPORT AT THE TOP TO PREVENT THE CABLE TENSION FROM PULLING ON THE EQUIPMENT.
2. ALL WORK TO BE PERFORMED IN THE CABINET SHALL BE COORDINATED AND SUPERVISED BY THE CITY. CONTACT TRAFFIC SIGNAL SUPERVISOR (623) 930-2762 AT LEAST TWO DAYS PRIOR TO ANY WORK.
3. CCTV CAMERA SHALL BE MOUNTED WITHIN ONE DEGREE OF LEVEL ON BOTH HORIZONTAL AXIS.



MODIFIED Q POLE

CCTV COMPOSITE CABLE PROVIDED BY CAMERA SUPPLIER. CONTRACTOR TO COORDINATE REQUIRED LENGTH PRIOR TO DELIVERY OF CABLE. COMPOSITE CABLE SHALL RUN UNSPLICED FROM THE CCTV TO THE VIDEO ENCODER INSTALLED IN THE TRAFFIC SIGNAL CABINET.

SIGNATURES ON FILE



CITY OF GLENDALE
TRAFFIC SIGNAL AND ITS STANDARDS

CCTV FIELD EQUIPMENT

REVISION:
6/2007

T13-3